

# \$ Value of One Day Delay = 20% of Blockbuster Era Levels



**\$800,000**

in lost or delayed prescription sales

The average sales per day of prescription drugs and biologics have decreased by approximately \$100,000 each year since the 1990s.

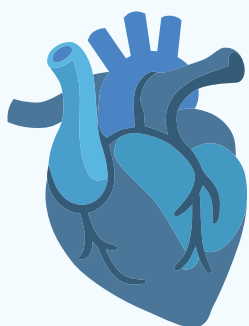
Orphan drugs & biologics generate

**62% higher**

mean daily prescription sales than do non-orphan drugs.



## HIGHEST AVERAGE DAILY PRESCRIPTION SALES



Cardiovascular

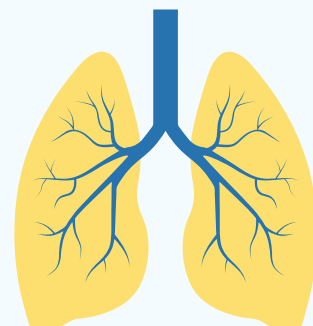


Hematology

## HIGHEST AVERAGE DAILY DIRECT COST FOR PHASE II & III



Immunology



Respiratory

The estimated direct daily cost to conduct a clinical trial is approximately \$40,500 for Phase II & III clinical trials, half the inflation-adjusted cost in the 1990s.

## ABOUT TUFTS CENTER FOR THE STUDY OF DRUG DEVELOPMENT (CSDD)



**48+ YEARS**  
of empirical research



**OVER 350**  
published manuscripts



**21 AFFILIATE RESEARCHERS**  
collaborate with industry stakeholders



**90%** of our funding comes from research grants & corporate sponsorships



**600+**

drug development professionals have completed our professional development programs in the past 5 years